



HighlandGriffith
CHAMBER OF COMMERCE

Promoting Good Business

Member Happenings

HIGHLANDGRIFFITHCHAMBER.COM



Hasse Construction TOY DRIVE

Toy Donation Due by December 7, 2017

This year Hasse Construction is asking for your help to donate toys for a child who may not receive a gift during this holiday season. We are honored to support the non-profit "Helping Hands", which is a collaboration with the following organizations, the Northwest Indiana Building & Construction Trades Council, Town of Merrillville, Krieg & Devault, City of Gary, City of Hammond, First Midwest Bank, Lake County Economic Alliance, Lake County Commissioner's Office, Construction Advancement Foundation and NIPSCO, with a sole purpose to benefit the following charities, Ark Shelter (Gary), Sojourner Truth House (Gary), St. Joseph Carmelite (East Chicago), St. Jude (Crown Point), and The Rainbow Shelter (Gary).

A NEW, UNWRAPPED TOY FOR A CHILD OF ANY AGE

Monetary donations accepted.

Please make check payable to "Helping Hands c/o First Midwest Bank"

All monetary donations can be mailed to PO Box 300, Calumet City IL 60409 or dropped off to Kim O'Halloran, at 10 Lincoln Avenue, Calumet City, IL 60409



Drop off locations

Hasse Construction

10 Lincoln Avenue
Calumet City, IL 60409
8:00am - 4:00pm

Highland Office Center

2646 Highway Avenue
Highland IN, 46322
(JMJ Talent Staffing Office)

Porter Business Park

75 Balgrove Avenue
Valparaiso IN, 46383
(construction trailer
Wed & Fri)

FOR MORE INFO: call 219-688-1792 Or kohalloran@hasseconstruction.com

South Shore Toy Sorting & Wrapping



Sponsored by
**Becoming We the People and
Kempo Jujutsu Martial Arts
Academy**

When: Saturday, December 9 &
Sunday, December 17
12:00pm to ?

Both days are as needed. Please call
first. 219-838-9875

Where: 8929 Indianapolis Blvd.
Second Floor
Highland, IN 46322

We need your help!

Throughout our drive, we collect hundreds and hundreds of toys. Before we give them to the kids at need, we wrap the gifts. We need your help with sorting, cleaning, and wrapping the toys.

We will also take donations of wrapping paper, tape, gift tags, batteries (most sizes), and scissors.

Thank you in advance! You're helping put smiles on many kids' faces!



For more or information, please visit
www.kjmalearning.com
www.becomingwethepeople.org or email
southshoretoydrive@gmail.com



Highland, Indiana

AMERICAN LEGION POST 180



"Non-profit veteran's organization devoted to mutual helpfulness"

OPEN TO THE PUBLIC

2ND SUNDAY OF EVERY MONTH!

ALL YOU CAN EAT

BREAKFAST BUFFET

8:00 am to 11:00 am

ONLY \$6.00 A PERSON ~ KIDS 5 YRS & YOUNGER EAT FREE!



BREAKFAST INCLUDES; FLUFFY PANCAKES, SCRAMBLED EGGS, BISCUITS & GRAVY, SAUSAGE & HASHBROWNS

BEVERAGES INCLUDED; COFFEE, MILK & JUICE

LOCATED ON THE CORNER OF RIDGE ROAD & 2ND STREET IN HIGHLAND
QUESTIONS PLEASE CALL 219-972-3948 OR 219-671-1208

THANK YOU EVERYONE FOR YOUR CONTINUED SUPPORT!

Shop Local Raffle at the Highland Branch Library!



How to participate:

- Make a purchase of any amount at a Highland small business between Nov. 25 and Dec. 16.
- Bring in your receipt to the Highland Branch Library
- Visit our Shop Local display and receive a raffle ticket for a \$25 gift card from a Highland small business of your choice
- The winner will be contacted Dec. 18



2841 Jewett Ave. Highland IN 46322
(219) 838-2394
www.lcplin.org

Neighbors Helping Neighbors The Griffith Emergency Fund Holiday Toy Drive



Help us brighten a child's life by participating in our toy drive. Please drop off new, unwrapped toys at our office. Please note: We cannot accept monetary donations.

The Toy Drive runs November 13th until December 15th, 2017

All donations benefit Griffith Emergency Fund

Our Office
1939 W Glen Park Ave
Griffith, IN 46319

For more information, contact your
Edward Jones financial advisor.



Shawn H Graham

Financial Advisor

1939 W Glen Park Ave
Griffith, IN 46319
219-924-2565

www.edwardjones.com Member SIPC

Edward Jones cannot accept gift cards, cash or checks as donations.

CEA-9647A-A EXP 31 MAY 2019 © 2017 EDWARD D. JONES & CO., L.P. ALL RIGHTS RESERVED.

Edward Jones[®]
MAKING SENSE OF INVESTING

TIS' THE SEASON.....

TO BE THANKFUL FOR WHAT WE HAVE AND GIVE TO THOSE IN NEED.

**JOIN AMERICAN LEGION POST 180
IN OUR ANNUAL
FOOD**

**DRIVE**

TO HELP FAMILIES IN NEED THIS HOLIDAY SEASON.

- ❖ **WE WILL BE COLLECTING NON PERISHABLE FOOD ITEMS AND MONETARY DONATIONS THROUGH DECEMBER 17TH.**
- ❖ **DONATIONS CAN BE DROPPED OFF AT POST 180's CLUB ROOM ANY DAY BETWEEN 3:00 PM TO 9:00PM.**
- ❖ **CAN'T MAKE IT TO US GIVE US A CALL WE CAN SCHEDULE TO PICK UP ANY DONATIONS.**

**IF YOU OR SOMEONE YOU KNOW IS IN NEED PLEASE CONTACT
LARRY HIGGINS OR KIM CARLISLE. ALL REQUESTS WILL
REMAIN ANONYMOUS AND CONFIDENTIAL.**



American Legion Post 180

2703 Jewett Street,

Highland, Indiana 46322

Phone (219)972-3948

Email: Americanlegion180@att.net

Parents' Night Out

Who: You!

When: Monday, December 18, 2017

From 5:30-8:00 pm

Where: 2906 Highway Avenue,
Highland IN 46322

Milestone Therapy is hosting another Parent Respite Night — an open gym, movie, craft and game night for our young clients and their siblings from ages 0-16. So while we watch the kids you get to escape for a few hours! Maybe have a nice dinner? A few drinks? Most of all, just go out and relax knowing that your kiddos are in the hands of some very skilled pediatric caregivers.

Only \$10 per child for the entire evening!

Please RSVP to Erin at 219-513-8311

Sponsored by Milestone Therapy!



South Shore Toy Drive 2017



**Sponsored by
Becoming We the People and
Kempo Jujutsu Martial Arts
Academy**



**We collect new toys, of course, but we also do "toy rescue" and collect used toys, too.
We collect locally and distribute to local kids in need throughout Lake & Porter Counties.**

Drive ends on December 16, 2017.

Drop-off Locations:

Highland

Kempo Jujutsu Martial Arts Academy
Edward Jones
Highland/Griffith Chamber of Commerce
Primerica
Family Eye Care
Culver's in Highland
Artistic Family Dental

East Chicago

Family Eye Care

St. John

Century 21 McCarthy Realty
Aspen Cafe

Crown Point

MJ Electric
Inter-State Studios
Café Fresco

Hobart

Librarium Café
Prime Real Estate

Hammond

White Ripple Gallery
Cavalier Inn
Brightwood College

Schererville

McInnis Auto

Merrillville

Robert Plantz & Associates

Griffith

Grindhouse Café
Balanced Nutrition
McAleer and Gall Dentistry

Valparaiso

Barre & Beyond
Montessori Academy
Sam Allie State Farm Insurance

Chesterton

Chesterton Toys
Team O'Connor Martial Arts & Fitness

Guidelines for used toys:

- **Clean without marks or scratches.**
- **All pieces and parts must be included.**
- **We will take stuffed animals if you wash them in a washing machine first (and dry them).**
- **Choose toys that will make good gifts, gently played with toys**

www.becomingwethepeople.org

www.kjmalearning.com

southshoretoydrive@gmail.com

219-838-9875



Humane Indiana



JANUARY 2nd - 5th

AGES 7-12

9AM-4PM

Come & Join Us!

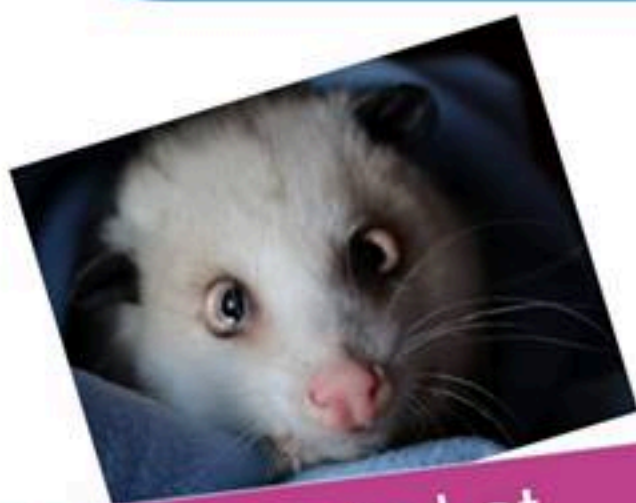
Exciting activities to discover!

WINTER CAMP 2018

**Arts & crafts
Meet wildlife
Garden growing
Nature presentations**

\$150

Each day campers will experience a new and exciting theme, that is both fun and educational. Learn about the importance of native wildlife and the impact humans have on the environment!



Located at
Humane Indiana's
South Shelter

Register Online:
Humaneindiana.org

For more information contact Nicole | education@humaneindiana.org

LIP SYNC BATTLE

Sponsored by The Highland Education Foundation



Have you ever dreamed of being on stage? Do you jam on an air guitar?
Is Milli Vanilli your idol?
Now's your chance to put your hidden talents to the test!

Sign up to participate in the first LIP SYNC BATTLE sponsored by
The Highland Education Foundation.

Friday, February 2nd
Highland High School Auditorium

For more information or to sign up, please contact Doug Lewis at
douglas.lewis@edwardjones.com or 923-1482.

The Highland Education Foundation funds grants for School Town of Highland
Educators to provide more learning opportunities for their students.