



HighlandGriffith
CHAMBER OF COMMERCE

Promoting Good Business

Member Happenings

HIGHLANDGRIFFITHCHAMBER.COM

South Shore Toy Drive 2017



**Sponsored by
Becoming We the People and
Kempo Jujutsu Martial Arts
Academy**



**We collect new toys, of course, but we also do “toy rescue” and collect used toys, too.
We collect locally and distribute to local kids in need throughout Lake & Porter Counties.**

Drive ends on December 16, 2017.

Drop-off Locations:

Highland

Kempo Jujutsu Martial Arts Academy
Edward Jones
Highland/Griffith Chamber of Commerce
Primerica
Family Eye Care
Culver's in Highland
Artistic Family Dental

East Chicago

Family Eye Care

St. John

Century 21 McCarthy Realty
Aspen Cafe

Crown Point

MJ Electric
Inter-State Studios
Café Fresco

Hobart

Librarium Café
Prime Real Estate

Hammond

White Ripple Gallery
Cavalier Inn
Brightwood College

Schererville

McInnis Auto

Merrillville

Robert Plantz & Associates

Griffith

Grindhouse Café
Balanced Nutrition
McAleer and Gall Dentistry

Valparaiso

Barre & Beyond
Montessori Academy
Sam Allie State Farm Insurance

Chesterton

Chesterton Toys
Team O'Connor Martial Arts & Fitness

Guidelines for used toys:

- **Clean without marks or scratches.**
- **All pieces and parts must be included.**
- **We will take stuffed animals if you wash them in a washing machine first (and dry them).**
- **Choose toys that will make good gifts, gently played with toys**

www.becomingwethepeople.org

www.kjmalearning.com

southshoretoydrive@gmail.com

219-838-9875

Neighbors Helping Neighbors The Griffith Emergency Fund Holiday Toy Drive



Help us brighten a child's life by participating in our toy drive. Please drop off new, unwrapped toys at our office. Please note: We cannot accept monetary donations.

The Toy Drive runs November 13th until December 15th, 2017

All donations benefit Griffith Emergency Fund

Our Office
1939 W Glen Park Ave
Griffith, IN 46319

For more information, contact your
Edward Jones financial advisor.



Shawn H Graham

Financial Advisor

1939 W Glen Park Ave
Griffith, IN 46319
219-924-2565

www.edwardjones.com Member SIPC

Edward Jones cannot accept gift cards, cash or checks as donations.

CEA-9647A-A EXP 31 MAY 2019 © 2017 EDWARD D. JONES & CO., L.P. ALL RIGHTS RESERVED.

Edward Jones[®]
MAKING SENSE OF INVESTING

Shop Local Raffle at the Highland Branch Library!



How to participate:

- Make a purchase of any amount at a Highland small business between Nov. 25 and Dec. 16.
- Bring in your receipt to the Highland Branch Library
- Visit our Shop Local display and receive a raffle ticket for a \$25 gift card from a Highland small business of your choice
- The winner will be contacted Dec. 18



2841 Jewett Ave. Highland IN 46322
(219) 838-2394
www.lcplin.org

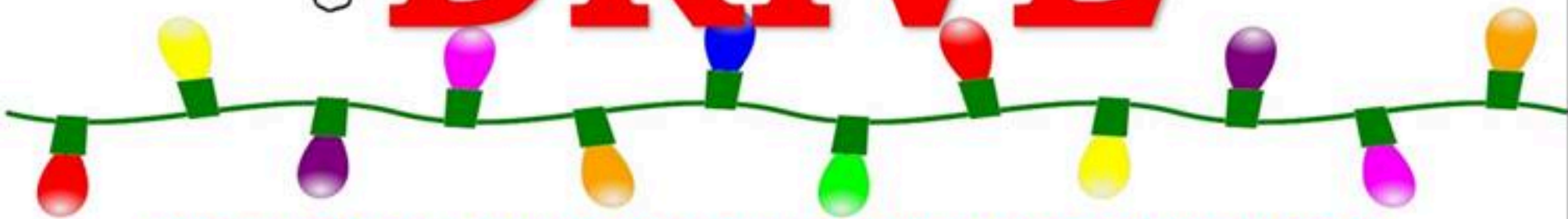
TIS' THE SEASON.....

TO BE THANKFUL FOR WHAT WE HAVE AND GIVE TO THOSE IN NEED.

**JOIN AMERICAN LEGION POST 180
IN OUR ANNUAL
FOOD**



DRIVE



TO HELP FAMILIES IN NEED THIS HOLIDAY SEASON.

- ❖ **WE WILL BE COLLECTING NON PERISHABLE FOOD ITEMS AND MONETARY DONATIONS THROUGH DECEMBER 17TH.**
- ❖ **DONATIONS CAN BE DROPPED OFF AT POST 180's CLUB ROOM ANY DAY BETWEEN 3:00 PM TO 9:00PM.**
- ❖ **CAN'T MAKE IT TO US GIVE US A CALL WE CAN SCHEDULE TO PICK UP ANY DONATIONS.**

**IF YOU OR SOMEONE YOU KNOW IS IN NEED PLEASE CONTACT
LARRY HIGGINS OR KIM CARLISLE. ALL REQUESTS WILL
REMAIN ANONYMOUS AND CONFIDENTIAL.**



American Legion Post 180

2703 Jewett Street,

Highland, Indiana 46322

Phone (219)972-3948

Email: Americanlegion180@att.net

South Shore Toy Sorting & Wrapping



Sponsored by
**Becoming We the People and
Kempo Jujutsu Martial Arts
Academy**

When: Saturday, December 9 &
Sunday, December 17
12:00pm to ?

Both days are as needed. Please call
first. 219-838-9875

Where: 8929 Indianapolis Blvd.
Second Floor
Highland, IN 46322

We need your help!

Throughout our drive, we collect hundreds and hundreds of toys. Before we give them to the kids at need, we wrap the gifts. We need your help with sorting, cleaning, and wrapping the toys.

We will also take donations of wrapping paper, tape, gift tags, batteries (most sizes), and scissors.

Thank you in advance! You're helping put smiles on many kids' faces!



For more or information, please visit
www.kjmalearning.com
www.becomingwethepeople.org or email
southshoretoydrive@gmail.com

Parents' Night Out

Who: You!

When: Monday, December 18, 2017

From 5:30-8:00 pm

Where: 2906 Highway Avenue,
Highland IN 46322

Milestone Therapy is hosting another Parent Respite Night — an open gym, movie, craft and game night for our young clients and their siblings from ages 0-16. So while we watch the kids you get to escape for a few hours! Maybe have a nice dinner? A few drinks? Most of all, just go out and relax knowing that your kiddos are in the hands of some very skilled pediatric caregivers.

Only \$10 per child for the entire evening!

Please RSVP to Erin at 219-513-8311

Sponsored by Milestone Therapy!





Humane Indiana



JANUARY 2nd - 5th

AGES 7-12

9AM-4PM

Come & Join Us!

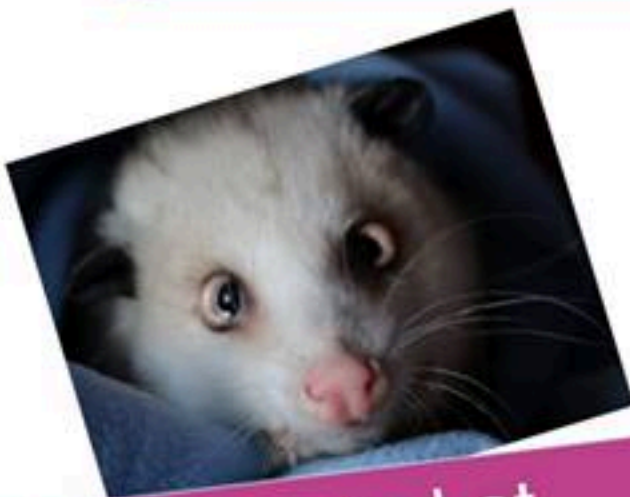
Exciting activities to discover!

WINTER CAMP 2018

**Arts & crafts
Meet wildlife
Garden growing
Nature presentations**

\$150

Each day campers will experience a new and exciting theme, that is both fun and educational. Learn about the importance of native wildlife and the impact humans have on the environment!



**Located at
Humane Indiana's
South Shelter**

**Register Online:
Humaneindiana.org**

For more information contact Nicole | education@humaneindiana.org

LIP SYNC BATTLE

Sponsored by The Highland Education Foundation



Have you ever dreamed of being on stage? Do you jam on an air guitar?
Is Milli Vanilli your idol?
Now's your chance to put your hidden talents to the test!

Sign up to participate in the first LIP SYNC BATTLE sponsored by
The Highland Education Foundation.

Friday, February 2nd
Highland High School Auditorium

For more information or to sign up, please contact Doug Lewis at
douglas.lewis@edwardjones.com or 923-1482.

The Highland Education Foundation funds grants for School Town of Highland
Educators to provide more learning opportunities for their students.



24 Hour Rape Crisis Line –
(219) 218-2552

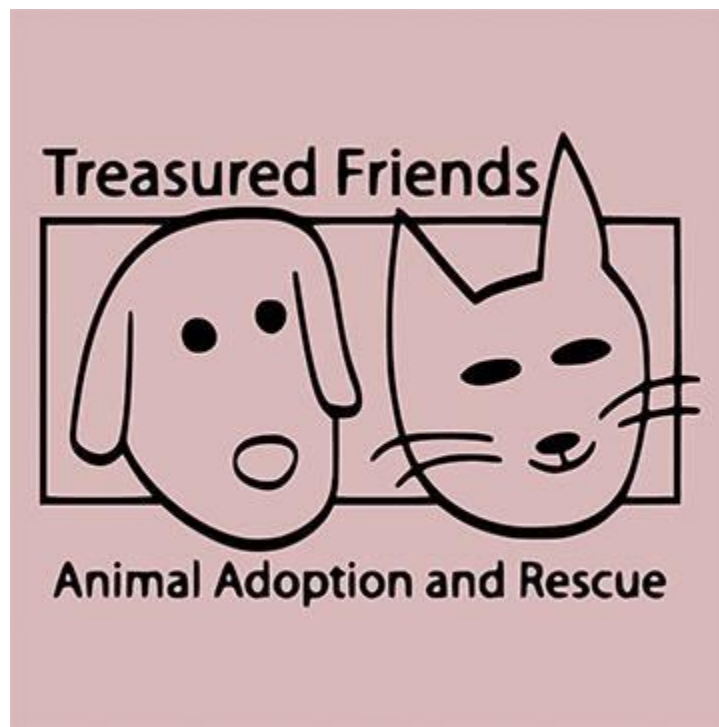
Crisis Intervention Response Bags

Needed Items

Due to the sensitive nature of what these bags are used for,
we are requesting that all items be new.

Item	Colors	Sizes
T-Shirts – Ladies & Men	Black, Red, or Gray	Sizes Medium – XXL (ladies) Size Large (men)
Sweatpants – Ladies & Men	Black or Gray	Sizes Medium – XXL (ladies) Size Large (men)
Underwear – Ladies & Men	Dark Colors	Sizes Medium – XXL (ladies) Size Large (men)
Bras	Dark Colors (“work out” style that do not have a defined cup size)	Sizes Medium – XXL
Socks – Ladies & Men	Any (no patterns)	Sizes Medium – XXL (ladies) Size Large (men)
Toiletry Kits – Ladies & Men	Travel Sized	Shampoo, Conditioner, Body Wash, Toothbrush, Toothpaste, Comb, Hair band, Deodorant, Lotion
Flip-flops or Slippers that can be worn outside	Any	All sizes

If you have any questions or to arrange a drop-off time, please feel free to reach out to Nyohmi (219) 961-4357x415 or nbuzo@asafeport.org.



Treasured Friends Rescue is always thankful for any items you can donate. Contributions are tax-deductible, as allowable by law. Some of the items we are in need of are:

- Cat and Dog Food (Dry & Wet)
- Cat and Dog Treats
- Cat and Dog Toys
- Cat Litter
- Crates & Carriers
- Pet Beds
- Food Dishes
- Shampoo
- Brushes
- Leashes
- Collars
- Towels and Rags

Please bring any items to our adoption event at the Schererville Petsmart Saturday or Sunday from 12am - 4pm, or drop them off at the Schererville Petsmart anytime, just make sure that it is marked "Treasured Friends".

Monetary donations are also accepted and tax deductible.

Treasured Friends, Inc.
P.O. Box 9234
Highland, IN 46322
Phone: 219-381-8562
Email: treasuredfriendsrescue@gmail.com